

## Round Table

### Measuring health and nutrition transition considering the role of pollution and biodiversity

**Moderators:** Mario Raviglione (University of Milan), Hellas Cena (University of Pavia),  
Rosaria Gesuita (Università Politecnica delle Marche)

**Water related health risks from climate change** - Manolis Kogevinas, ISGlobal Barcelona

**Pollen, chemical pollution and health: a progress update** - Alessandro Marcon, University of Verona

**Biodiversity in the urban environment** - Andrea Galimberti, National Biodiversity Future Center

**How to quantify the influence of pollution and climate change on food security** - Leila Itani, Beirut  
Arab University

Fabio Castaldo, Saipem Health

**Eni Global Health Model and Challenges in Energy Transition Context** - Simone Mortara, Global  
Health - Competence Centre, Eni



# WEBINAR

## Imaging Global Health in a less polluted Earth

**Eni Global Health Model and  
Challenges in Energy Transition  
Context**

Mortara Simone Fortunato

Global Health - Competence Centre, Eni

---



UNIVERSITÀ DI PAVIA

# We are an Energy Company

## Eni Mission and Business Model



Alliances for sustainable development, contribute to the creation of value for all stakeholders and support Eni's action for a people centred and equitable Just Transition, which requires technological, cultural, social and economic change

According to the so-called "Dual Flag" approach, the action of Eni is based on a profound respect for the single individual, on knowledge of local issues and on the willingness to work alongside Countries to promote sustainable development also through partnerships with nationally and internationally recognized players

Eni implements initiatives with a long-term perspective taking into account the promotion and the respect for human rights, the challenges of countering the effects caused by climate change and by population growth



UNIVERSITÀ DI PAVIA

### VALUE CREATION FOR STAKEHOLDERS

Through an integrated presence all along the energy value chain



# Global Health Competence Center



Regulatory system and processes

Monitoring and reporting of health during project's implementation



UNIVERSITÀ DI PAVIA

# Community Health

## SECTORS OF INTERVENTION



MATERNAL AND CHILD HEALTH



PRIMARY HEALTH CARE



COMMUNICABLE AND NON-COMMUNICABLE DISEASES



NUTRITION



SAFE WATER AND SANITATION



MEDICAL EMERGENCY

## TYPE OF INTERVENTION



HEALTH INFRASTRUCTURE



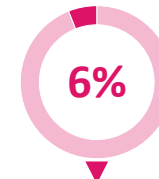
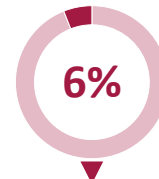
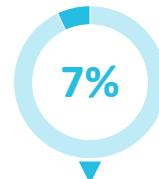
TECHNICAL AND HEALTH SUPPORT ACTIVITIES



PROFESSIONAL TRAINING AND CAPACITY BUILDING



EXTRAORDINARY SUPPORT ACTIVITIES FOR LOCAL HEALTH AUTHORITIES



# Research and Development

## Health global trends and energy transition



### Completion of the 2<sup>nd</sup> Year of research activities

- Risk stratification of haemorrhagic fevers
- Health Impacts of Climate Change
- Accountability of Eni's health and welfare system
- Health aspects related to biofuel product

### 4 winners of the call for researchers identified and awarded

- Rocco Antonio Montone – Agostino Gemelli University Polyclinic Foundation IRCCS
- Domenico Bagordo and Maria Piazza – University of Padova
- Roman Vuerich - University of Trieste Reparata Rosa Di Prinzio – Catholic University of the Sacred Heart, Rome

Annual event “Corporate welfare and synergies with public health” held on 13 September, hosted at Gazometro in collaboration with Road

- Total participants 172 - 150 in person and 22 online

### Scientific dissemination - in progress

### 3<sup>rd</sup> Year activities has been defined and has been launched

- Analysis of the health effects of the conversion of the Marghera power plant to biofuel plant
- Systematic review of the health effects of exposure to bitumen's fume
- Awareness and Climate Change
- Eni Health case and the corporate strategy on health culture
- One Health and Water – industrial and community health initiatives
- Transversal area - STEM oncology screening



## HEALTH IMPACT AND SPECIFIC EPIDEMIOLOGICAL STUDIES

### Conclusive epidemiological studies

- Analysis of the mortality determinants and cancer incidences in the SIN in Sicily
- Analysis of the mortality determinants and cancer incidences in the SIN of Manfredonia and Crotona



### Publication of article UNIVERSITÀ DI PAVIA Internationals Journal of Environmental research and Public Health

- Analysing the Impact on Health and Environment from Biogas Production Process and Biomass Combustion: A Scoping Review

### ENI-SLT approved of research activity on

- health impacts on workers and adjacent communities of Eni GEMENT SYSTEM biogas production plants

## RESEARCH COLLABORATION ENI R&D AND SLT



### Eni – Dompé research agreement

- study of health aspects related to the biofeedstock Eni's activities, and analysis of their use for therapeutic purposes
- periodic monitoring of high infection incidences in Eni's presence contexts aiming the rapid identification of possible critical issues with potential epidemic
- molecular modeling on HPC5 for repositioning and development of drugs and/or vaccines for a rapid response to infectious agents



### Famiglie GNAO1 – Associaz

- Therapeutic responses to the rare disease - Parents and CNR - in progress

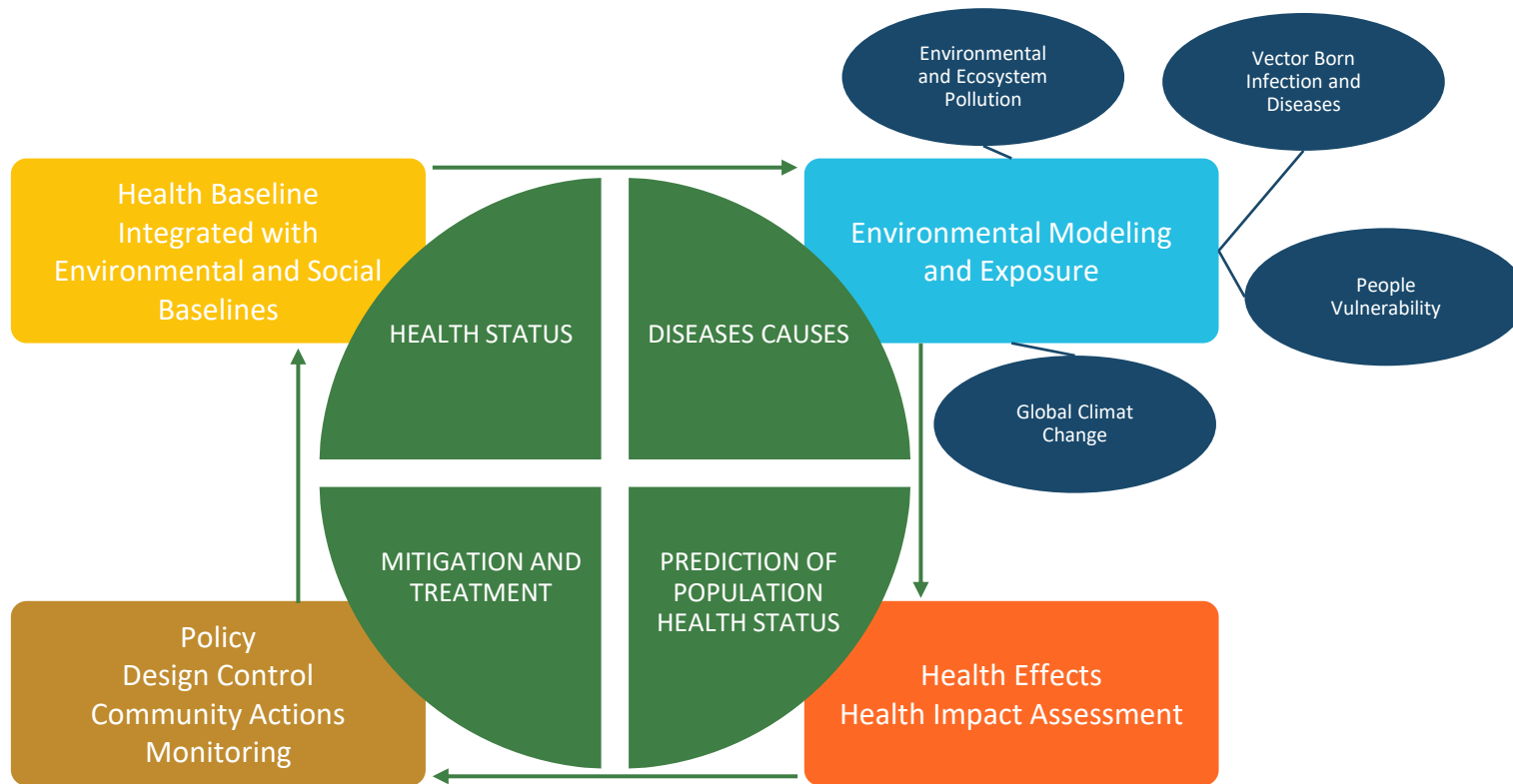


### University of Pavia - Prof. Colombo

- Models of interaction between oncogenic molecules and receptors and interactions between odorous substances and endocrine disruptors of production processes and human cells – in progress



# Health Impact Assessment



## Health Impact Transformation and activities

### MANAGEMENT SYSTEM

- Revision of Company Technical Guidelines of the Health Impact Assessment and the Health Baseline
- Adoption of health risk approach with reinforcement of the epidemiological and toxicology assessment
- Full integration of the HIA and in industrial project processes
- Extension of the HIA to the business value chain

### HIA 2023 Performance

- 4 Pre-HIA
- 5 ESHIA
- Epidemiological studies – **see slide 6**

### Partners and Stakeholders

- Driving joint work with IOGP – IPIECA on health effects of energy transition and revision of HIA technical guideline
- Active Participation in the IAIA annual conference

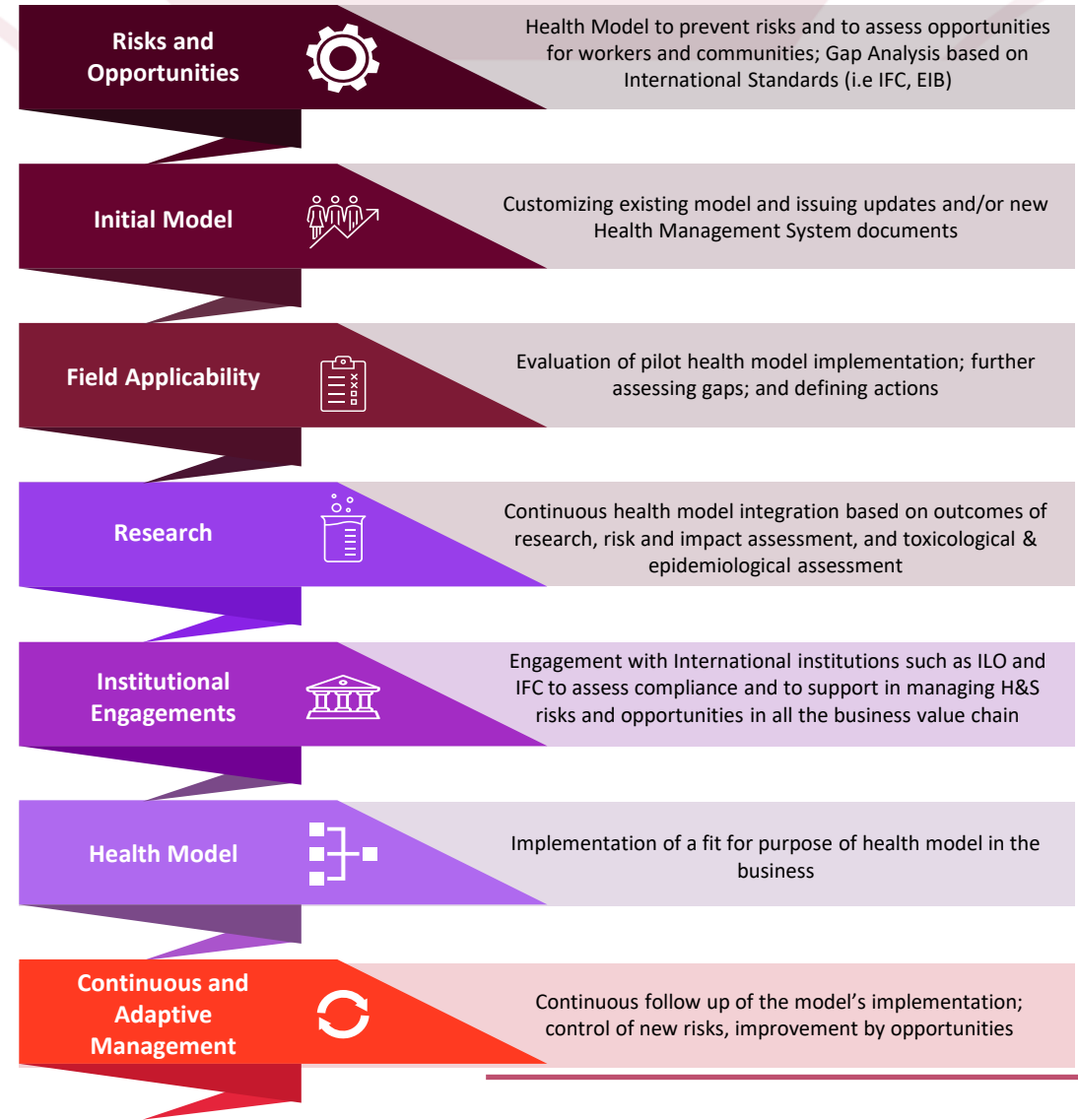
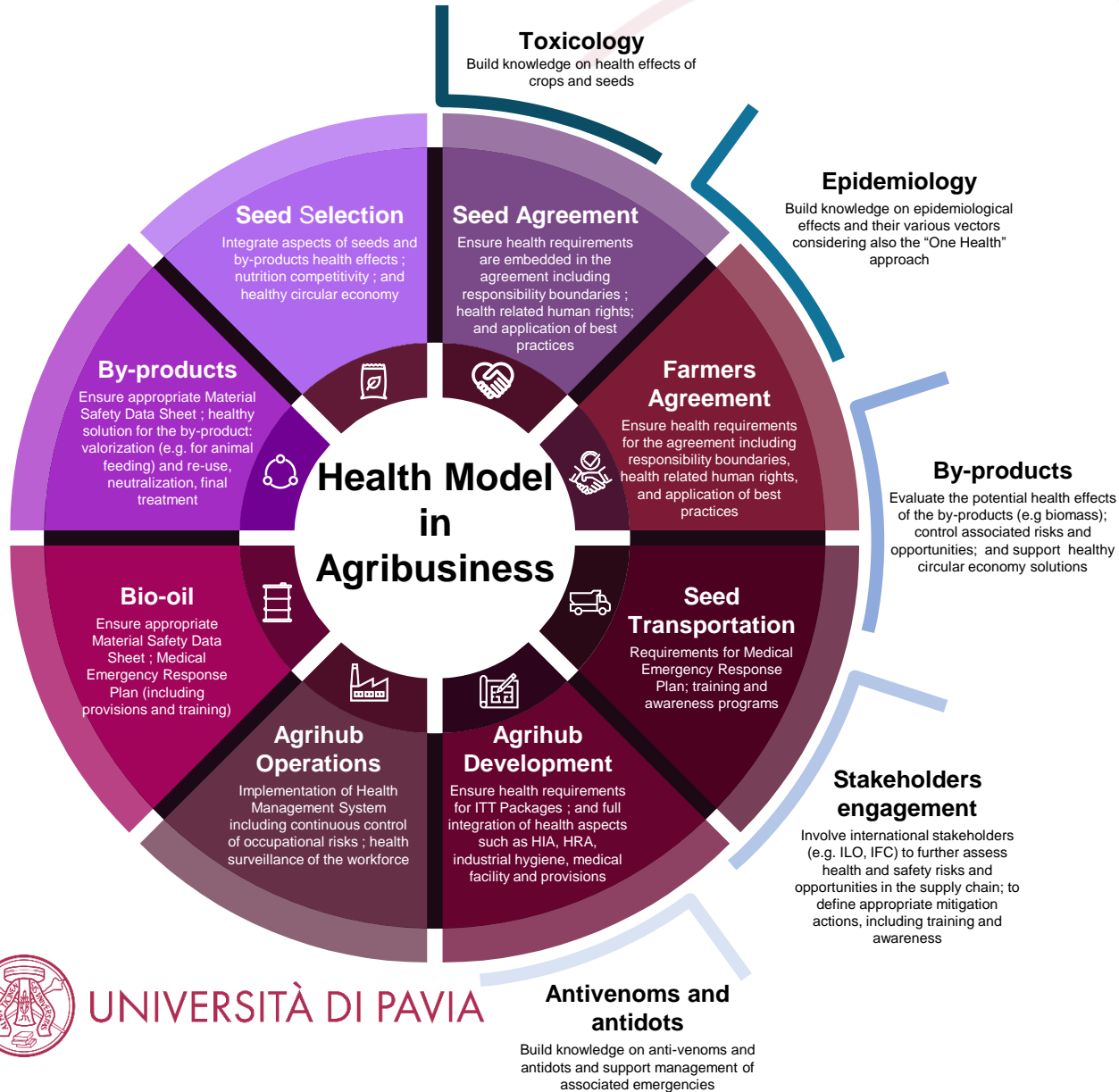
### Trend and Vision

- Initiation of adopting of and building knowledge on new concept such as health effects of ecosystem toxicity



# Health in Agribusiness for Energy

## Pillars and pathways toward model implementation





# Health and Clean Cooking

## Integration of the health component in Clean Cooking projects

01

### Health Impact Assessment

Monitoring and evaluating the long-term outcomes and impacts given by the adoption of “Improved Cookstoves” on community health and health-related behaviours



02

### Community Health

Improving community health through health promotion and disease prevention activities based on context priorities, in parallel with the adoption of the “Improved Cookstoves”



03

### Culinary Art - Health and Energy

Enhancement of positive impacts and promotion of best practices aimed at improving community health and conscious use of energy sources through cooking

